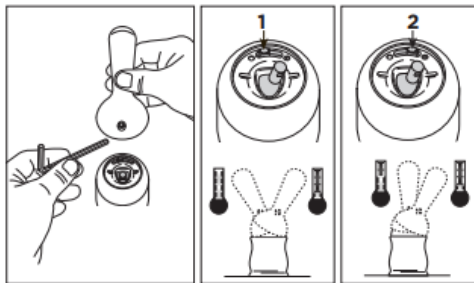


Kitchen and Bath Cartridges:

Tip: Newer DST models use PEX supply lines; older models use copper supply lines

Single Handle Diamond Valve - 1H: **RP50587**

- w/single handle DST faucets
- Diamond embedded ceramic cartridge
- For faucets that include an integrated handle limit stop
 - 2 positions for red switch:
 - Position 1 – to the left (full range from all hot to all cold)
 - Position 2 – to the right (1/2 normal handle motion (all cold to mixed hot/cold))



Setting The Handle Limit Stop (Optional)

This faucet includes an integrated handle limit stop that has two positions. Position 1, to the left, allows full handle motion (the full range between "all cold" to "all hot"). The faucet is set in position 1 in the factory. Position 2, to the right, allows half of the normal handle motion ("all cold" to "mixed hot/cold").

The handle limit stop can be adjusted by the homeowner once the faucet is installed. Setting the handle limit stop in position 2 may help to prevent scalding because it limits the amount of hot water in the mix; however, this handle limit stop will not always prevent scalding because it does not compensate for incoming pressure or sudden water temperature changes.

To change positions of the handle limit stop: remove the handle; move the valve stem to the all cold position so the water is on; change the position of the handle limit stop; turn off the water; reinstall the handle.



Euro-Motion Diamond Valve: **RP60114**

- Use with Addison (discont.), Cassidy, & Trinsic single handle DST kitchen faucets
 - Use with Addison (discont.) DST deck mount bathroom sink Faucets
- Diamond embedded 32 mm ceramic cartridge



Euro-Motion Diamond Valve (Short Stem): **RP73000**

- Use with Zura, Compel, & Trinsic single handle DST deck mount bathroom sink faucets
- Use with Trinsic pull-out faucets
- Use with Essa & Mateo kitchen & bar faucets
- Diamond embedded 32 mm ceramic cartridge



Tip: Typically, the seats and springs are the only parts needed for a drip, however if your model is leaking under the handle, you will need to replace the stem unit as well.

Stem and Valve: RP90056

- Use with Ara (tall) single handle bathroom sink faucets
- Euro-motion 28 mm ceramic valve



Stem and Valve: RP91902

- Use with Ara (short)/Pivotal single handle bathroom sink faucets
- Euro-motion 28 mm ceramic valve



Two Handle Diamond Valve: RP60400

- Use with 2 handle DST faucets (DST Victorian)
- Diamond embedded cartridge
- Not interchangeable with RP25513
 - If customer has older, non-DST version (w/ seats and springs), most likely need RP25513 (X2) along with RP4993 (X1) seats and springs



Single Handle Valve: RP34324

- Ceramic cartridge
- Use with Grail pull-down kitchen faucets



Stem Assembly – 2H: RP25513

- Use with 2 handle faucets (usually widespread lav faucets)
- Brass stem; hot and cold valves
- Includes 1/4 turn stop (“tooth” = RP24097)
- RP24069 = same part but with 180° turn
- Remember: order 2 with 1 order of RP4993 seats and springs



Stem Assembly – 2H: RP1740

- All plastic; hot and cold valves
- Typically used in conjunction with a clear knob handle (old – 90’s tub/shower)
- Remember: order 2 with 1 order of RP4993 seats and springs



- Cartridge (2) – 2H Ceramic Stem: **RP47422**
- For ceramic seatless stem assemblies (2 handle kitchen and lav faucets)
- Cartridges are sold as a pair
- Quarter stop included (90° turn with; 180° turn without)
 - Flat part of stem should face away from spout on either side w/ Crescent piece facing
 - Placed on back for cold side and front for hot side
- Not interchangeable with RP25513



Temp2O Tub & Shower Cartridge Assembly: **EP78407**

- Monitor single-function pressure balance cartridge
- Use with 14 Series with Temp2O feature
- Allows digital temp read out



Cartridge Adapter – 17 Series: **RP46073**

- For MultiChoice 17 series (after March 2006)
- Comes pre-assembled
- Included with RP46463 cartridge



Tip: Ball assembly internal parts are seats and springs, ball assembly, and cam and packing. None of these control temperature.

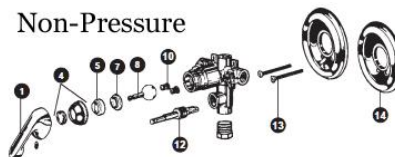
Tip: Ball assemblies do not normally need to be replaced – clean mineral build up and replace seats and springs.

Tip: If customer wants to convert from knob to lever (ball assembly):

If the knob handle on your shower faucet lifts up to turn on the water, then you will need a RP20111 conversion ball and a RP17443 Chrome lever handle. If the knob handle just turns counter-clockwise to turn on the water, then you will only need to order a H79 Chrome lever handle.

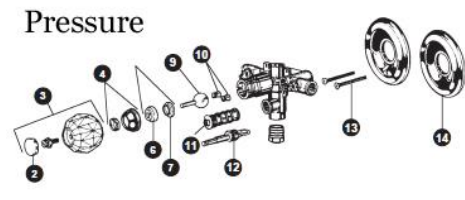
Stainless Steel Lever Handle Ball Assembly: **RP70**

- Single metal lever handle; shower (600 series)
- Round stem
- 2 holes
- Excludes 1300-1800 series tub & showers
- Works with RP4993 seats and springs or RP 3614 (2 seats and springs, 2-O-rings, 1-cam & packing)
- Only ball manufactured for older Delta single handle kitchen faucets



Stainless Steel Knob Handle Ball Assembly: **RP212**

- Single acrylic knob lever handle; shower (600 series) and non-DST lav faucets
- Diamond shaped stem
- 3 holes – 2 inlet, 1 outlet
- Excludes 1300-1800 series tub & showers
- Works with RP4993 seats and springs



Diverter Cartridges:

3-Setting Diverter Cartridge Assembly: **RP51918**

- 2 individual positions, 1 shared position
- Use with integrated (R22000 trim) & individual (R11000 trim) diverter trims
- For all States except California
- White bottom



6-Diverter Diverter Cartridge Assembly: **RP51919**

- 3 individual positions, 3 shared positions
- Use with integrated (R22000 trim) & individual (R11000 trim) diverter trims
- For all States except California
- Gray bottom



Tip: Diverter cartridges that start w/ RP7 = California Non-Shared cartridge

Due to droughts, California has a law that says they're not allowed to have 2 functions on at once.

2-Setting Non-Shared Diverter Cartridge Assembly: **RP71717**

- 2 individual positions, no shared positions
- Use with integrated (R22000 trim) & individual (R11000 trim) diverter trims
- California laws require this cartridge (other states can use)



3-Setting Non-Shared Diverter Cartridge Assembly: **RP71718**

- 3 individual positions, no shared positions
- Use with integrated (R22000 trim) & individual (R11000 trim) diverter trims
- For California laws require this cartridge (other states can use)

